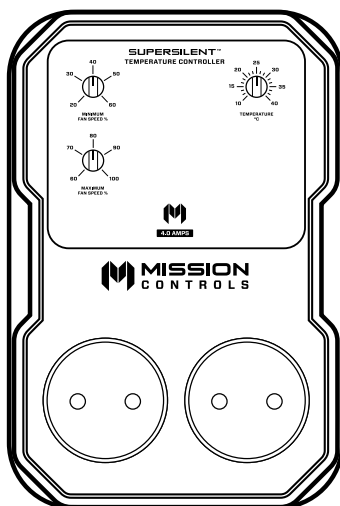




**MISSION<sup>®</sup>**  
**CONTROLS**

**READ = SUCCESS**  
**IGNORE = FAILURE**



# **SUPERSILENT<sup>™</sup>**

## **TEMPERATURE CONTROLLER**

**4.0A**

**User Instructions**

EN

RU

SQ

PL

LT

NL

FR

DE

IT

ES



# SUPERSILENT™

## TEMPERATURE CONTROLLER

4.0A

### Features:



Enviro-Sense™



Night-Pulse™



Fluid-Motion™



Perfect-Sine™



Optimized-Airflow™

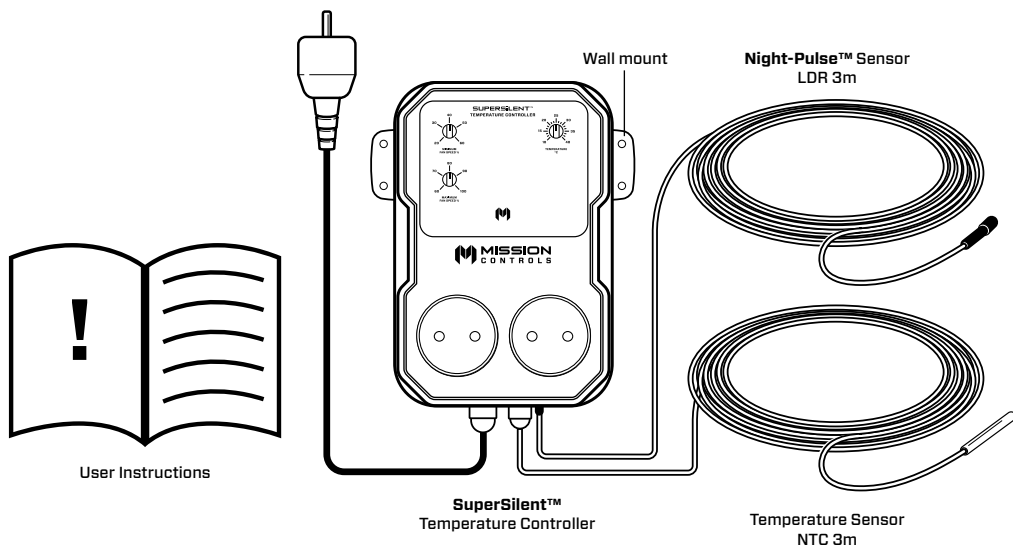


No-Humm™

- Controls up to 2 fans
- Ultra-silent & ultra-smooth fan speed control
- Energy efficient
- Kind on motors
- Integral Wall Mount
- Power Lead 3m
- 2 year warranty
- CE Certified

Understanding Features - Visit [www.missioncontrols.com](http://www.missioncontrols.com)

### What's in the box:



**Need more assistance?**

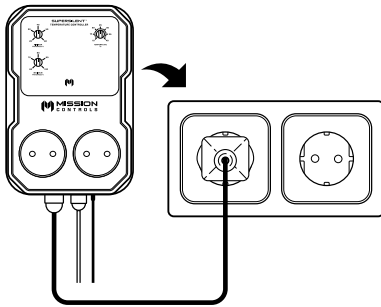
Scan the QR or visit our website for help:  
[www.missioncontrols.com](http://www.missioncontrols.com)



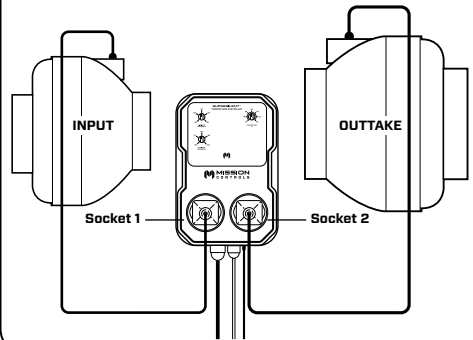
## Setting up:

EN

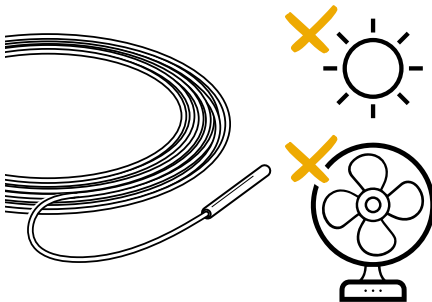
- 1 Plug **SuperSilent™** Temperature Controller into mains socket. Leave the mains power switched off until you have completed setup.



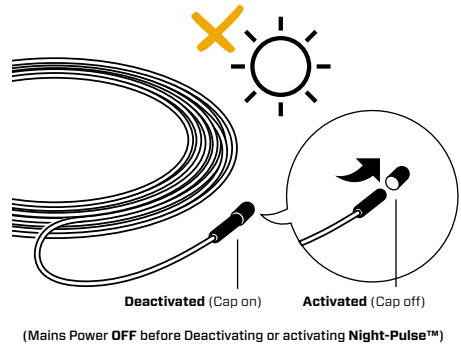
- 2 Plug input fan into socket 1, and outtake fan into socket 2.



- 3 Position Temperature Sensor inside room at canopy height, taking care to avoid places where it may take a false reading, such as directly under lights, or in front of fan.



- 4 Position **Night-Pulse™** sensor inside room where it can detect light. Do not put directly under light.

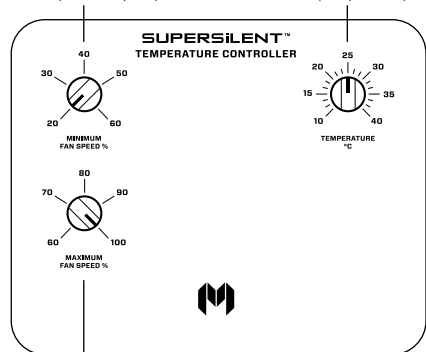


## How to use:

1. Set minimum fan speed on dial 1, set maximum fan speed on dial 2. Fans will work between these parameters. For the largest operating range, we recommend Min 20% and Max 100%.
2. Set target temperature on dial 3.
3. **Night-Pulse™** Deactivated = Cap on. Activated = Cap off. Mains power must be off before activating or deactivating.
4. Switch on at mains.
5. Controller will enter a short period of calibration. During this time, fans may pulse up and down. After approximately 5 minutes, fans will find the right speed.

Dial 1 (Min Fan Speed)

Dial 3 (Temperature)



Dial 2 (Max Fan Speed)



# SUPERSILENT™

## TEMPERATURE CONTROLLER

### 4.0A

#### Technical Specifications:

4.0A	220/240V	50Hz	900W
------	----------	------	------

Please visit [www.missioncontrols.com](http://www.missioncontrols.com) and navigate to the product page to download the instruction manual in your preferred language.



[www.missioncontrols.com/learn](http://www.missioncontrols.com/learn)



**MISSION®**  
**CONTROLS**

[www.missioncontrols.com](http://www.missioncontrols.com)